



MATISS, INC
www.shadesbymatiss.com

product overview



Modern Luxury Unique

Why Shades by Matiss

Matiss, Inc, founded in 2007, is a leading manufacturer of highest quality custom window shade applications. Our production plant is located in Hoboken, NJ. Essential attributes of our business are:

Made in America

All our products are manufactured in the USA, allowing us to reduce our lead times and expand our offerings. Made in the USA means: Top quality products at lowest prices in the industry and fastest delivery timeframes.

Large Fabric Stock

Our large fabric stock allows us to fulfill the orders in shortest terms.

Genuine Hardware and Materials

In manufacturing our products we use only genuine RollEase, ZMC hardware, Somfy motorization components and also best quality fabrics.

Quality Products at Lowest Prices

We offer cost effective and technologically advanced safe and reliable products specifically for the business specializing in big projects. Our prices target volume orders at the best price without compromising quality and delivery timeframes. We get our materials directly from supplying manufacturers, which allows us to cut the middlemen and offer unbeatable prices on our products.

Most Advanced Technology and Equipment.

In manufacturing process we use only industry's most reliable equipment. All fabrics are cut with an ultra-sonic machine, which guarantees no fraying on edges and insures production of highest quality shades comparable to leading brands in today's market. New state of the art Asco cutting table and rollup device recently installed at our warehouse, allows us to produce a higher shade quantity per day at superior quality. We can attach every single shade for the tube in perfect 90 degree angle. Every shade is made with perfect seal closed hem bar pockets.

Flexibility on Size and Product Applications

Manufacturing of products at our Hoboken facility allows for bigger shade size availability with maximum shade width up to 192" and over 300" height. This also gives us an opportunity to offer coupled and dual options as well as blackout side channel option.

Minimal Error Rate

We have industry's lowest error rate of less than 1/2%.

Limited Lifetime Warranty

It is our mission to insure that our products and services have met your expectations. We have built our reputation for retaining and growing our customer base by solving problems using our expertise, innovative products and exceptional service.

Roller Shades

Top Cover Choices

Pockets are offered in 3 different sizes: 3", 4" and 6". All available in white and anodized finishes.

Cassettes are offered in 3 different sizes: 80, 100 and 120, available in white, vanilla, anodized, bronze and black finishes, as well as custom fabric covered options.

Fascia is offered in 3 different sizes: 3", 4" and 5", available in white, vanilla, anodized, bronze and black finishes, as well as custom fabric covered options.

We use full line of premium commercial and residential roller shade products. Our roller shades are offered as single, dual, coupled or angle coupled.

Skyline by RollEase: Sleek, Versatile, Smooth and Dependable Clutches

The Skyline Collection includes a hooked clutch, a universal bracketing system with covers, 2-on-1 shared bracket option, spring loaded pin end and notchless curved and square fascia system, different projection brackets, Galaxy, spring loaded clutches.

The Skyline system features an improvement on the smooth and dependable operating clutch technology found in the R-Series, in a sleeker and rounded profile. RollEase clutches are ideal for both residential and commercial applications. There's no need to sacrifice design for function.

Available in:

6 Colors – White, Vanilla, Cream, Gray, Brown, Black

Exterior clutches also available (using stainless steel springs)

6 Tube Diameters – 1" (25mm), 1-1/8" (28mm), 1-1/4" (32mm), 1-1/2" (38mm) with Matching End Plugs, 2" (50mm) and 2.5" (63mm)

6 Adapters – 1-1/4" (32mm), 1-1/2" (38mm), 40mm, 43mm, 2" (50mm), 2-1/2" (63mm)

Brackets – Standard, Ribbed, Narrow, Double and Intermediate for multiple in-line shades

Features & Benefits:

- Spring-loaded pin-end technology is highly forgiving for greater flexibility in installation
- Velvetrol internal spring arrangement provides a smoother feel when pulling a shade up or down
- Sleek, rounded end cap and no-notch fascia design for a more polished finish
- Universal brackets available in standard and dual with multiple projections; also available in elongated or narrow bases for installation in narrow spaces, including many European profile windows
- Hooked clutches for easy and universal performance
- Fiberglass-filled nylon construction provides long lasting durability
- Brighter white and colored materials
- Backed by a Limited Lifetime Warranty

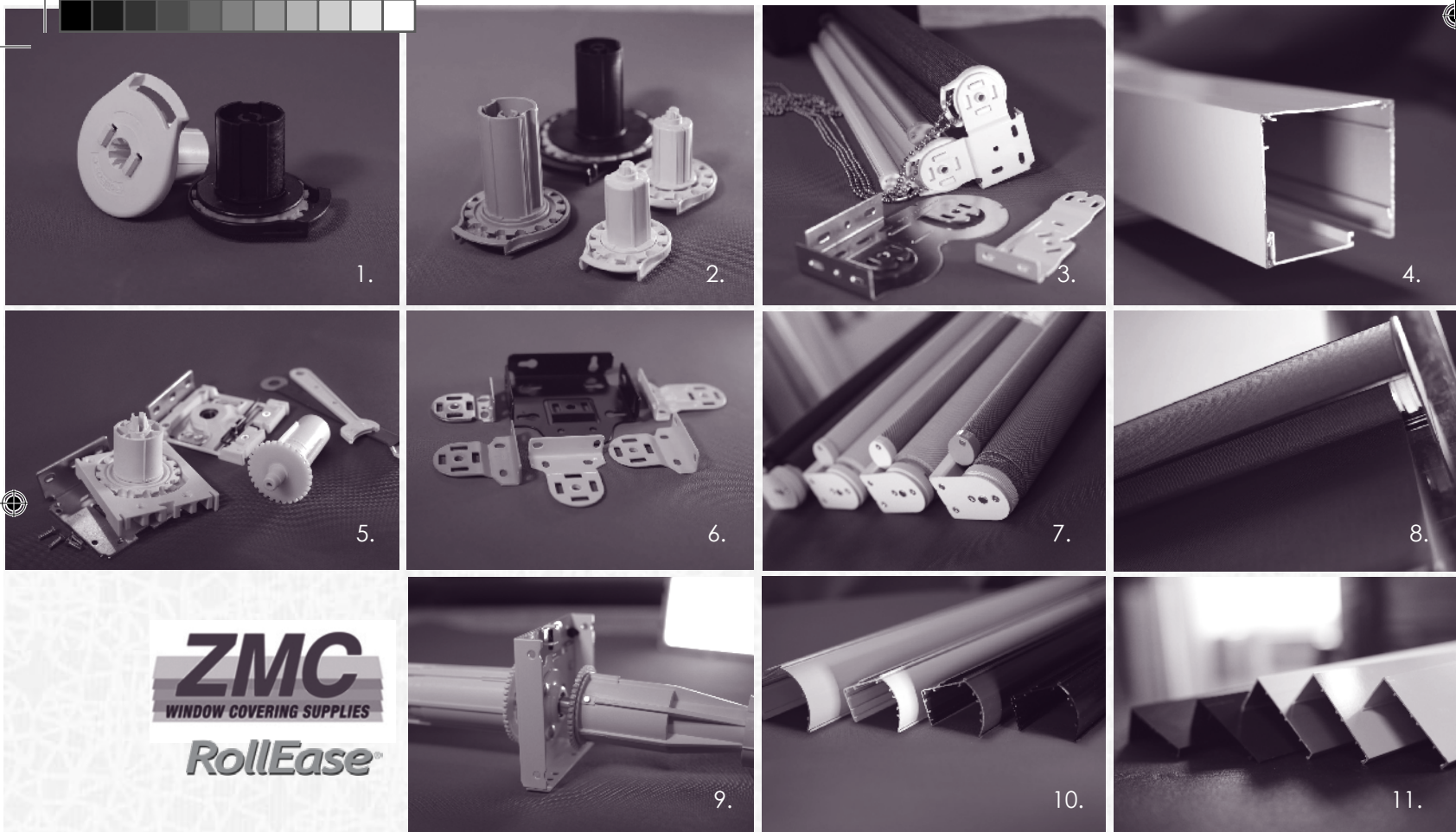
Skyline by RollEase

Compatible with:

3", 4" and 5" Fascia Systems
Cassette 80, Cassette 100 and
Cassette 120 Systems
Contract Pockets and
Blackout Channels
Galaxy and Spring Assist
Link System

RollEase®

+ Commercial & Residential Shades up to 192" in width and over 300" in height



1. RollEase Galaxy Clutch, 2. Skyline Clutches SL10, SL15, SL20, SL30, 3. Dual Shade Brackets, 4. Pocket, 5. Architectural Series Components, 6. Skyline Brackets, 7. RollEase Easy Spring Plus, 8. RollEase Easy Spring Plus with Cassette, 9. Architectural Series Coupling Brackets, 10. Cassette, 11. Fascia

RollEase R Series Clutch System

The most dependable roller shade clutches on the market.

For more than 30 years, RollEase R-Series clutches have been the market leader when it comes to reliability, dependability and strength. RollEase pioneered the R-Series clutch in 1982 and no one has been able to beat it since. RollEase R-Series clutches are ideal for handling commercial applications or large weights. R-Series clutches stand up to heavy use time and time again. This spring mechanism creates ease of pull for smooth, uninterrupted lifting of window coverings.

Features & Benefits:

- Heavy shades feel light - Multi-spring design for easy pull
- Never needs adjusting - Manufactured to tolerances within .004" (0.1mm)
- Shade stays secure in brackets - End plug bracket locking feature prevents slippage
- Trouble-free performance - Fiberglass-reinforced resin PBT housing
- Backed by a Limited Lifetime Warranty

Architectural Series

CM System is a 4" fascia system ideal for heavy duty commercial applications. The brackets are made with 3 mm thickness steel plate good for multi-band or single band applications. Roller bearing is used on both clutch and adjustable idle end bracket to ensure smooth and quiet operation. The 4" fascia can easily "snap on" the clutch and idle end bracket without the need of notching fascia.

Roller Shades

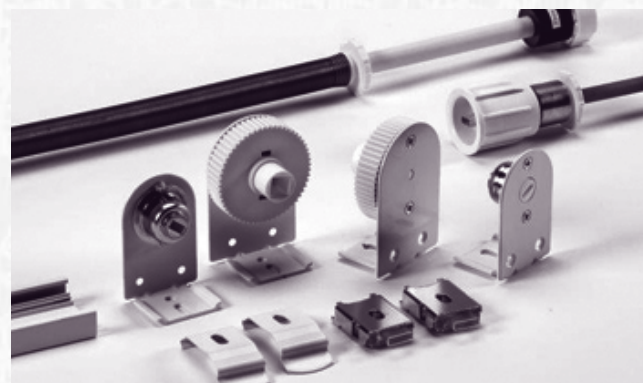
Optional Clutch Mechanisms



Cordless Spring Roller Shades

EasySpring Plus: Superior performance, wide selection, child and pet safe

EasySpring Plus cordless spring rollers eliminate concerns about safety and aesthetics often associated with a dangling cord and comply with WCMA/ANSI standards making roller shades safe for both children and pets. The durable construction of the EasySpring Plus ensures years and years of reliable performance. Our unique cordless lift system is manufactured with just a few parts making it easy to assemble and quick to install. The EasySpring Plus's tight and secure fit into shade headers prevents shades from popping out of brackets. EasySpring Plus offers a variety of systems—including options on tube and spring sizes, single and dual shade applications, and adjustable wheel brackets—making it the perfect choice for any shade application in homes, offices, planes, yachts, and other recreational vehicles.



- Child and pet safe
- Sleek window shade appearance
- Easy-to-assemble in your fabrication area and quick to install
- Available for shades up to 96" wide
- Single and Dual shade options
- 5 systems to choose from
- 2 bracket choices:
 - With side adjuster for minimal light gap
 - With adjuster wheel for easy after installation adjustments
- Available in 1 1/4" (32 mm) and 1 1/2" (38mm) diameters
- 3 spring sizes for each tube size - for very small to large windows
- Speed reducer built into spring
- Use with Cassette 100 or Cassette 120 for a clean, polished look

Smartroll™ System

Silent and safe solution for cordless roller shades

Smartroll™ technology provides a safe, smooth and silent cordless solution for roller shades. Smartroll™ mechanism operates through patented automatic rolling spring system which guarantees trouble-free and secure use. Eliminating all cords and hazardous chains is now permanent, easy and affordable with smartroll™ technology.

Reliability. The production of smartroll is continually tested. The mechanism passes 10,000 test cycles at maximum capacity, which guarantees the highest quality and endurance.

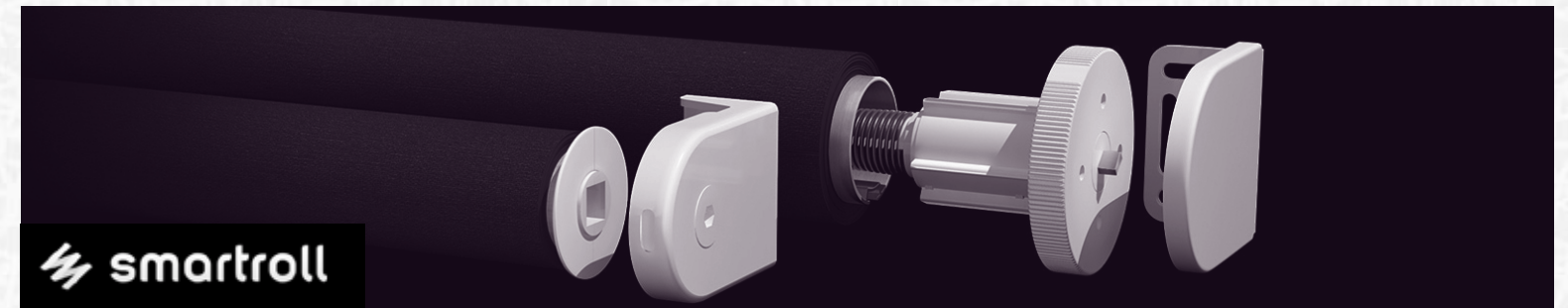
Functionality. From small to large windows, from light to heavy fabrics, the mechanism remains universal and easy to apply in the production for a large variety of solutions.

Safety. This spring system was designed with safety in mind. This technology eliminates danger brought on by cords and bead chains.

Comfort. Smooth, sleek and silent, smartroll system operates with an automatic touch. Easy to install, use and regulate for all custom needs. With smartroll, users can control the speed and home position.

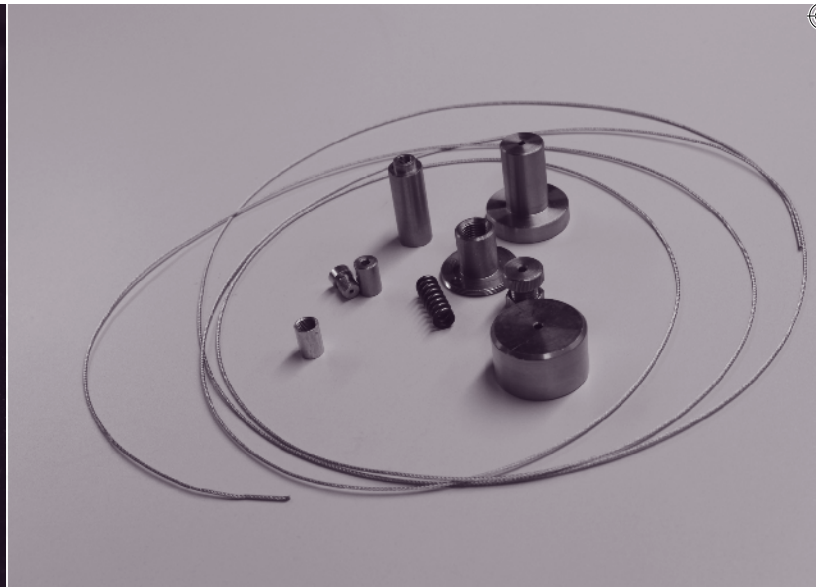
Roller Shades

Optional Mechanisms





Details



Hem Bar Options:

- Sealed pocket with closed ends comes standard
- Rounded external hem bar is available in white, vanilla, anodized and black
- Fabric wrapped

Chains

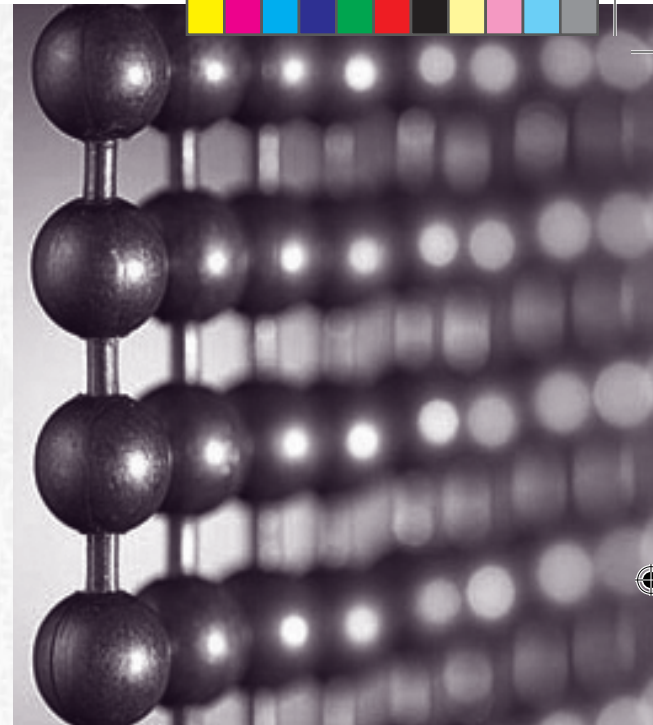
More people are discovering that ball chain used with blinds is available in a variety of colors that adds life to your space and provides a more upscale look. Whether your client likes a pewter look or a dungeon finish or the antique appearance of medieval brass, you will find the effect you are looking for. Not only the chains are available in a variety of colors, connectors, "B" couplings, stop balls are available in matching colors as well.

Metal Beaded Chains are offered in different finishes.

Metal Chain Color options:
 Metal Nickel over Steel comes standard, Also Available in Aluminum, Antique Brown, Black, Dungeon, Gun Metal, Medieval Brass, Mystic Red, Nickel Plated, Stainless Steel, White, Yellow Brass.
 Plastic beaded chain is available in white, vanilla, grey and black.

Other available components:

Safety Hold 3 and P Clip Safety Tensioner
 Side and Bottom Channels are also offered in a variety of colors
 Guide Wire System



Specialty

Bottom Up Shades
Solarium & Exterior Shades
Odd Shapes & Skylight Shades
(tension system or roman style)

Skylights

Our skylights are available in all shade cloth options: solar screen, blackout and translucent and perfectly coordinate with our roller shades and sliding panels.

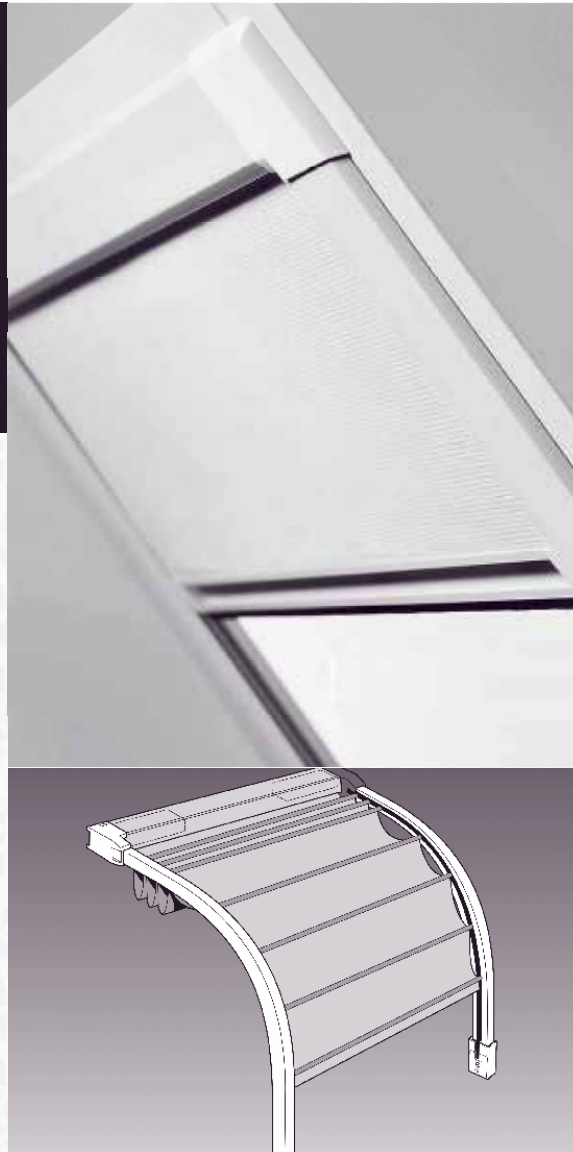
Bottom Up Roller Shades

Bottom Up System is now available on our roller shades.

Exterior & Solarium Shades

Inquire about our Exterior or Solarium shade applications, now available from the specialty department.

Page 12



Sliding Panel Track

Sliding Panel Track System is a smart panel system based on only one profile and few components. This panel system has five rail profiles and a cover profile.

Roman Shades

are available in all shade cloth options: solar screen, blackout and translucent.

Other Products

Sliding Panel Track
Roman Shade Systems
Wood Spring Roller Shades
Spring and Cord School Shades

Page 13



Motorization

In manufacturing of our products we use only genuine SOMFY, RollEase and ZMC hardware. Motorized Shades, an innovative solution for controlling natural light Motorized Shades powered by Somfy offer convenient and practical solutions. These shades offer a convenient solution to every day challenges. They provide privacy, glare reduction and eliminate the need to manually adjust heavy or hard-to-reach window coverings.

Motorized shades also eliminate dangerous cords and create a comfortable and safe environment for your children and pets.

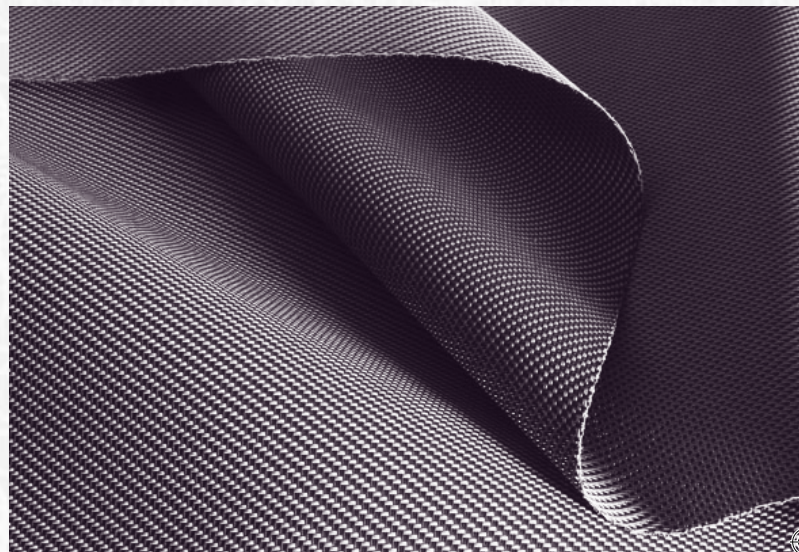
Somfy also offers a variety of options to maximize the performance of your motorized shades such as timers, sensors and even solar charged options; additionally controls are available in colors and styles to suit any preference and every décor type.

We offer full line of somfy motors and controllers like RTS (radio frequency) motors battery powered, solar power, low voltage and line voltage, intelligent motors, automated systems and more.





Solids Prints Textures



Solar Screen, Decorative, Blackout Fabrics

Alkenz SunShadow Screen Fabrics

Alkenz SunShadow Solar Screen fabrics offer a stylish and modern aesthetic for window treatments that minimize the negative effects of the sun, while preserving outward visibility. With an incredible range of fabric choices, SunShadow not only offers unmatched design and comfort, but also offers the most technically-advanced coated yarn in the industry with the highest durability factor.

SierraSol Blackout Fabrics

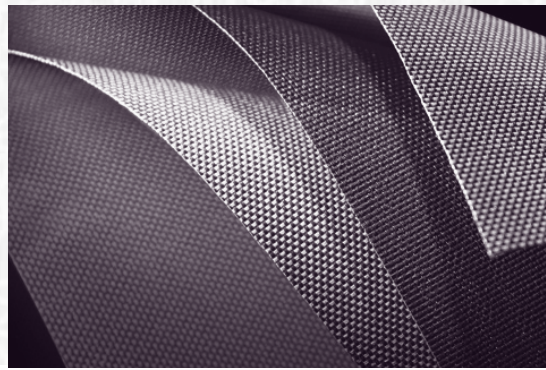
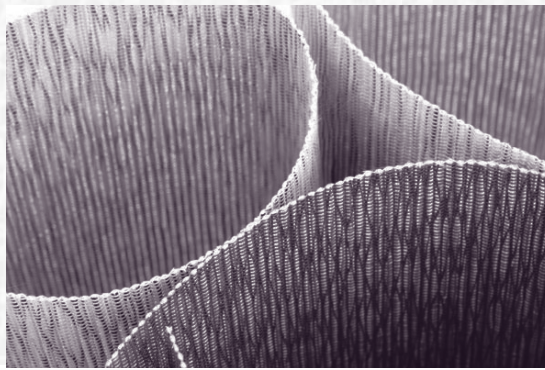
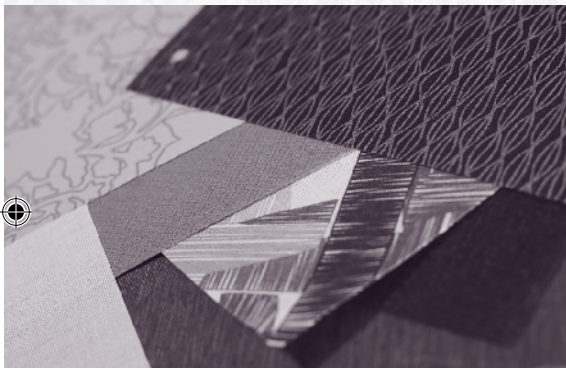
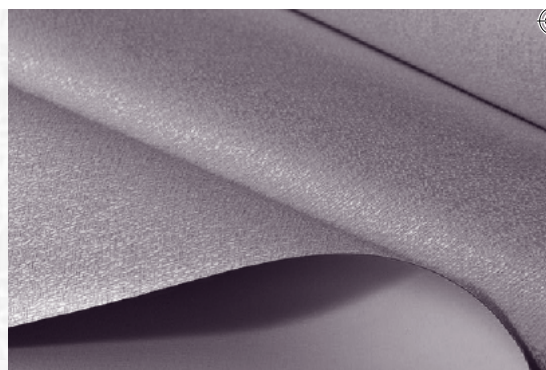
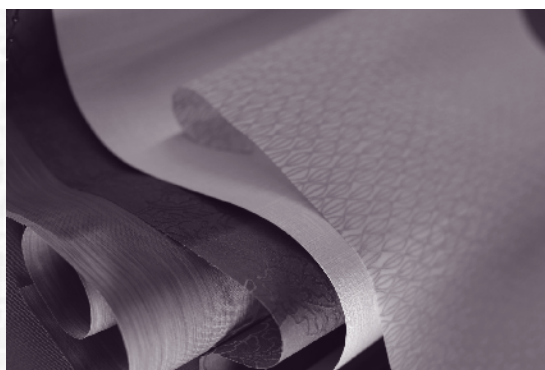
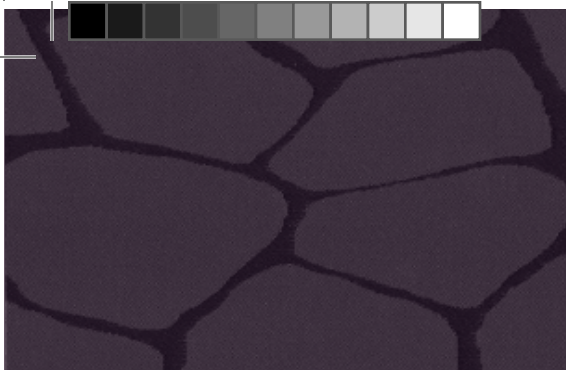
SierraSol is an exclusively branded fabric collection from RollEase offering total light blockage when complete room darkening or privacy is required. With its high-quality look and feel and wide assortment of popular colors, SierraSol will enhance the décor in any room.

Almedahls Daylight Control Fabrics

With an impeccable reputation for high quality and unique design along with quality service, Almedahls is one of the leading fabric producers in Europe. Throughout the years they have also established a solid reputation in United States. In their in-house design studio Scandinavian and international designers collaborate to bring innovative and timeless collections for everyday use to your residential and commercial interiors.

Mermet

Specializes in solar screen fabrics made from high quality coated fiberglass yarn, used primarily for internal and external solar screen shades. Mermet's innovative, functional fabrics are designed for solar protection, energy savings, pleasing visual aesthetics and acoustical comfort.



MATISS INC LIMITED LIFETIME WARRANTY

Matiss, Inc warrants that its products will be free from defects in materials and workmanship for so long as the original purchaser owns the product, provided these products were properly installed. Matiss, Inc shall repair or replace, in its sole discretion, the product or components found to be defective. Matiss, Inc shall not be responsible for shipping charges or labor costs incurred for measuring, demounting or installation. Repairs will be made with like or similar parts. Colors may vary from lot to lot and may not exactly match sample swatch, sample book or previous purchases. Discontinued components or color selections will be replaced with the closest equivalent current components. This shall be your sole remedy under this limited warranty. This warranty does not

cover any conditions resulting from accidents, alterations, normal wear and tear, improper installation, misuse or abuse, exposure to heat and humidity, fading or discoloration over time. All moving parts, such as cords, will eventually wear out and fabric may fray. We consider these things as normal wear and tear. Most of the motorized products and motor control systems are warranted for a period of 3 years from the date of purchase by original purchaser. To obtain warranty service, contact the dealer from whom you purchased the product. Warranty claims must be accompanied by proof of purchase. Products ordered outside of the recommended manufacturing specifications (oversized blinds, out of specs units, specialty units etc.) are not covered by this warranty. Please address all inquiries related to this warranty to your sales representative.



47 Harrison Street Hoboken NJ 07030 Tel. 201.710.5016 Fax. 800.414.1042 www.shadesbymatiss.com



MATISS, INC
www.shadesbymatiss.com

47 Harrison Street Hoboken NJ 07030 Tel. 201.710.5016 Fax. 800.414.1042 www.shadesbymatiss.com

