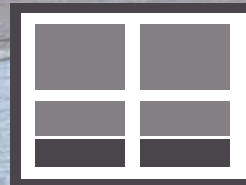


**Shades by Matiss**  
custom shading solutions



# Product And Reference Guide



Proudly Made in USA

**August, 2016**



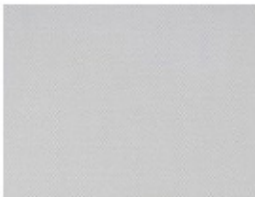
ALKENZ SUNSHADOW SOLAR SCREEN

# SUNSHADOW SOLAR SCREEN



Alkenz SunShadow® Solar Screen fabrics offer a stylish and modern aesthetic for window treatments that minimize the negative effects of the sun, while preserving outward visibility. With an incredible range of fabric choices, SunShadow not only offers unmatched design and comfort, but also offers the most technically-advanced coated yarn in the industry with the highest durability factor.

**3000 NET**



**3000 RR 3%**



**3000 CA 3%**



**3000 HT**



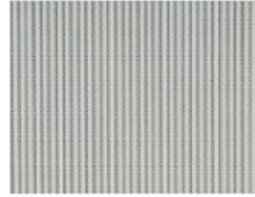
**3000 SS 3%**



**4700 P,Q**



**VIEW R 15%**



**4000 NET**



**4000 L**



Fabric Style	Price Group	openness	Fabric Width	Fabric Content	Railroad	Seam	FR
3000 NET	2	1%, 3%, 5%, 10%	78", 98", 118"	25% Polyester, 75% PVC	Yes	Yes	Yes
4000 NET	2	3%, 5%, 10%	78", 98", 118"	27% Polyester, 73% PVC	Yes	Yes	Yes
3000 RR	3	3%	98"	25% Polyester, 75% PVC	No	Yes	Yes
3000 HT	2	3%, 5%	98"	25% Polyester, 75% PVC	No	Yes	Yes
3000 CA	3	3%	98"	35% Polyester, 65% PVC	No	Yes	Yes
3000 SS	3	3%	98"	25% polyester, 75% PVC	No	Yes	Yes
4700 P/Q	3	1%	98"	20% Polyester, 80% PVC	No	Yes	Yes
4000 L/W	3	3%	98"	27% Polyester, 73% PVC	No	Yes	Yes
VIEW R	2	15%	98"	27% Polyester, 73% PVC	No	Yes	Yes



## SIERRASOL BLACKOUT FABRICS

# SIERRASOL BLACKOUT FABRICS

SierraSol is an exclusively branded fabric collection from RollEase offering total light blockage when complete room darkening or privacy is required. With its high-quality look and feel and wide assortment of popular colors, SierraSol will enhance the décor in any room.



**MESA**



**TEMPE**



**VISTA**



Fabric Style	Price Group	Openness	Fabric Width	Fabric Content	Railroad	Seam	FR
Mesa	3	Blackout	98", 118"	100% Polyester	No	Yes	Yes
Tempe	2	Blackout	98", 118"	100% Polyester	No	Yes	Yes
Vista	4	Blackout	110"	100% Polyester	No	Yes	No



VEROSOL FABRICS

# VEROSOL FABRICS

Verosol fabrics utilize a metalized backing facing the exterior, so heat and glare are reflected back outside the building. By regulating this heat and light, buildings not only benefit from significant energy savings, but also create a much more comfortable environment for occupants.

# Verosol



**ENVIROSCREEN 2%**



**SILVERSCREEN 2%**



**SILVERSCREEN 4%**



**OMNIASCREEN 3%**

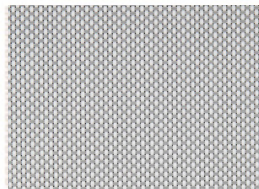


Fabric Style	Price Group	Openness	Fabric Width	Fabric Content	Railroad	Seam	FR
SilverScreen	6	2%, 4%	94"	36% Fiberglass, 64% PVC	No	Yes	Yes
EnviroScreen	6	2%	94"	100% Polyester	No	Yes	Yes
OmniaScreen	4	3%	94"	75% PVC, 25% Polyester	No	Yes	Yes
ClassicScreen *	1	3%, 5%	98.4"/118"	27% polyester, 73% PVC	No	Yes	Yes
Ambient	3	5%	118"	100% Polyester	No	Yes	Yes

**CLASSICSCREEN 3%, 5%**



**AMBIENT PVC FREE 5%**



\*Fabric has been discontinued. Available while supplies last.



## ALMEDAHL'S DESIGNER FABRICS

# ALMEDAHL'S DESIGNER FABRICS

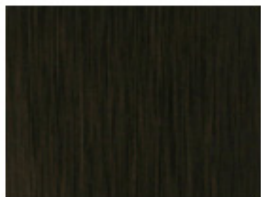
With an impeccable reputation for high quality and unique design along with quality service to the customers, Almedahls is one of the leading fabric producers in Europe. Throughout the years they have also established a solid reputation in the United States. In their in-house design studio Scandinavian and international designers collaborate to bring innovative and timeless collections for everyday use to your residential and commercial interiors.



**almedahls**

## BLACKOUT SERIES

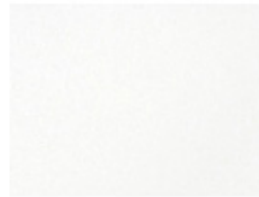
**GREEN  
COLLECTION  
BERGEN**



**TEXTURE AVESTA**



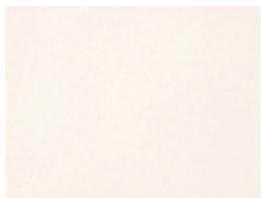
**TEXTURE BALI  
METALLIC**



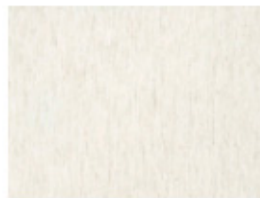
**TEXTURE BALSTA**



**TEXTURE SEVILLE**



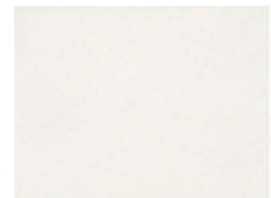
**TEXTURE SORIA**



**TEXTURE VIGO**



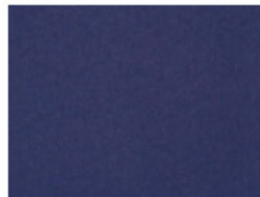
**UNI GENOA**



**UNI SIENA**



**UNI TORINO**



**BALMORAL**





ALMEDAHL'S DESIGNER FABRICS  
TRANSLUCENT SERIES

**almedahls**

**ROLLEASE  
ACMEDA**

<b>FIRE-RATED ANZIO</b> 	<b>FIRE-RATED BERGOMA</b> 	<b>FIRE-RATED KARIS</b> 	<b>FIRE-RATED PRINT LEAF</b> 	<b>UNI GELA</b> 
<b>GREEN COLLECTION MANDAL</b> 	<b>TEXTURE ALMERIA</b> 	<b>TEXTURE AVESTA</b> 	<b>TEXTURE CHAMBRAY</b> 	<b>UNI MILANO</b> 
<b>TEXTURE FALUN</b> 	<b>TEXTURE MARBELLA</b> 	<b>TEXTURE PALAMA</b> 	<b>TEXTURE PALENCIA</b> 	<b>UNI VERONA</b> 
<b>TEXTURE PALERMO</b> 	<b>TEXTURE ROMANA</b> 	<b>TEXTURE SANTIAGO</b> 	<b>TEXTURE STICKAN</b> 	<b>TEXTURE STITCH</b> 
<b>TEXTURE TARIFA</b> 	<b>TEXTURE TRENTO</b> 	<b>TEXTURE VILLACH</b> 	<b>BALMORAL</b> 	



ALMEDAHL'S DESIGNER FABRICS  
TRANSPARENT SERIES

almedahls

ROLLESE  
ACMEDA

GREEN  
COLLECTION  
KARUNA



TEXTURE  
CHENILLE



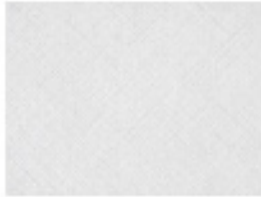
TEXTURE LINZ



TEXTURE MADRID



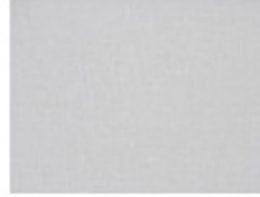
TEXTURE  
MCCONOR



TEXTURE  
REYKJAVIK



UNI NORA



# Retail Pricing

## ROLLER SHADES FABRIC LISTINGS

### ALMEDAHL'S DESIGNER FABRICS

**Shades by Matiss**  
custom shading solutions



Fabric Style	Price Group	openness	Fabric Width	Fabric Content	Railroad	Seam	FR
Almeria	4	Transparent	78"	90% Cotton, 10% Flax	Yes	Yes	No
Anzio	4	Translucent	92"	100% Polyester	Yes	Yes	Yes
Avesta	5	Translucent	80"	40% Viscose, 23% Polyester, 20% Cotton, 17% Flax	Yes	Yes	No
Avesta	5	Blackout	80"	40% Viscose, 23% Polyester, 20% Cotton, 17% Flax	Yes	Yes	No
Bali	5	Blackout	78"	100% Polyester	Yes	Yes	No
Balsta	5	Blackout	78"	100% Polyester	Yes	Yes	No
Balmoral LF	3	Translucent	118"	100% Polyester	Yes	Yes	No
Balmoral BO	4	Blackout	118"	100% Polyester	Yes	Yes	No
Bergen	5	Blackout	78"	100% Recycled Polyester	Yes	Yes	No
Bergoma	6	Translucent	86"	90% Cotton, 10% Flax	Yes	Yes	Yes
Chambray	3	Translucent	78"	100% Polyester	Yes	Yes	No
Chenille	2	Transparent	78"	100% Polyester	Yes	Yes	No
Falun	5	Translucent	78"	66% Cotton, 34% Polyester	Yes	Yes	No
Gela	2	Translucent	78"	100% Polyester	Yes	Yes	No
Genoa	4	Blackout	92"	100% Polyester	Yes	Yes	No
Karuna	5	Transparent	78"	100% Recycled Polyester	Yes	Yes	No
Linz	4	Transparent	78"	100% Polyester	Yes	Yes	No
Madrid	4	Transparent	78"	100% Polyester	Yes	Yes	No
Mandal	5	Translucent	78"	100% Recycled Polyester	Yes	Yes	No
Marbella	4	Transparent	78"	90% Cotton, 10% Flax	Yes	Yes	No
McConor	3	Transparent	78"	100% Polyester	Yes	Yes	No
Milano	1	Translucent	78"	100% Polyester	Yes	Yes	No
Nora	2	Transparent	78"	100% Polyester	Yes	Yes	No
Palama	4	Translucent	78"	100% Flax	Yes	Yes	No
Palencia	4	Transparent	78"	90% Cotton, 10% Flax	Yes	Yes	No
Palermo	4	Transparent	78"	90% Cotton, 10% Flax	Yes	Yes	No
Print Leaf	5	Translucent	92"	100% Polyester	Yes	Yes	Yes
Reykjavik	3	Transparent	78"	100% Polyester	Yes	Yes	No
Romana	4	Transparent	78"	80% Cotton, 20% Flax	Yes	Yes	No
Santiago	4	Translucent	78"	60% Cotton, 40% Flax	Yes	Yes	No
Seville	5	Blackout	78"	100% Cotton	Yes	Yes	No
Siena	5	Blackout	78"	100% Polyester	Yes	Yes	No
Soria	5	Blackout	78"	86% Polyester, 14% Flax	Yes	Yes	No
Stickan	3	Translucent	78"	100% Polyester	Yes	Yes	No
Stitch	5	Translucent	78"	93% Polyester, 7% Cotton	Yes	Yes	No
Tarifa	4	Translucent	78"	80% Cotton, 20% Flax	Yes	Yes	No
Torino	2	Blackout	78"	100% Polyester	Yes	Yes	No
Trento	4	Translucent	78"	100% Cotton	Yes	Yes	No
Verona	2	Translucent	78"	100% Polyester	Yes	Yes	No
Vigo	5	Blackout	78"	100% Cotton	Yes	Yes	No
Vilach	4	Translucent	78"	86% Polyester, 14% Flax	Yes	Yes	No

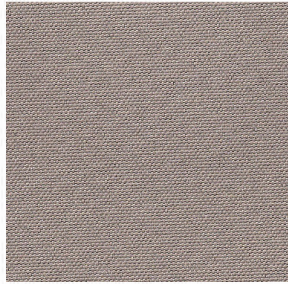


## PREMIUM & VINYL BLACKOUT FABRICS

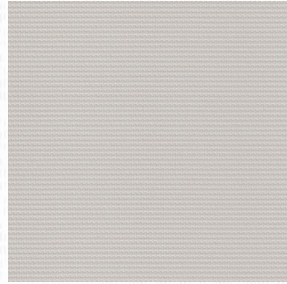
### PREMIUM BLACKOUT SERIES



Darksourc Cosmo  
Blackout



Shaw Palm Beach  
Blackout



Meridian  
Blackout

Fabric Style	Price Group	Openness	Fabric Width	Fabric Content	Railroad	Seam	FR
Palm Beach	4	0%	94"/118"	100% Polyester w/ Acrylic Backing	Y	Y	N
Cosmo	3	0%	118"	100% Polyester w/ Acrylic Coating	Y	Y	Y
Meridian	3	0%	118"	100% Polyester	Y	Y	Y

### VINYL BLACKOUT SERIES



Panta-Flex FR



Panta-Flex Moire FR



Panta-Flex Boucle FR

Fabric Style	Price Group	Openness	Fabric Width	Fabric Content	Railroad	Seam	FR
Panta-Flex FR	1	0%	54"/72"/77"/98"/120"	PVC-laminated Fiberglass	Y	Y	Y
Panta-Flex Moire FR	1	0%	54"/72"/77"/98"/120"	PVC-laminated Fiberglass	Y	Y	Y
Panta-Flex Boucle FR	1	0%	54"/72"/77"/98"/120"	PVC-laminated Fiberglass	N	Y	Y

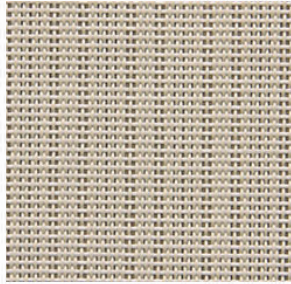
**Note:** \*Items marked in blue are not standard widths. Subject for 10% surcharge.



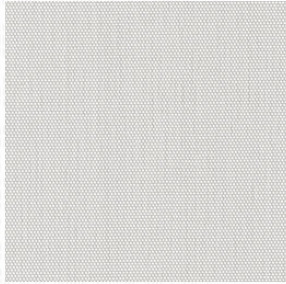
MERMET FABRICS

**MERMET**

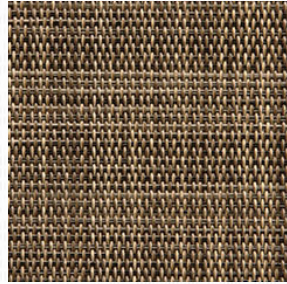
Sun Control Textiles™



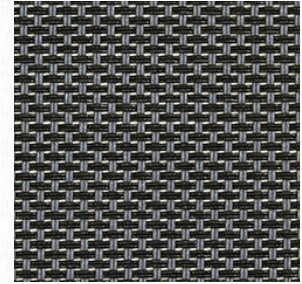
A Screen 14%



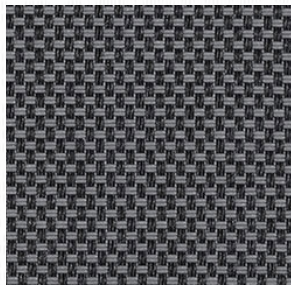
Chroma



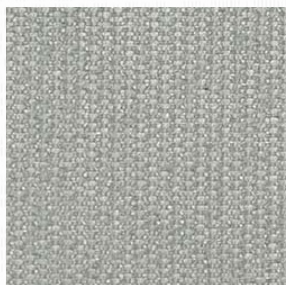
Deco Screen 3% / 5%



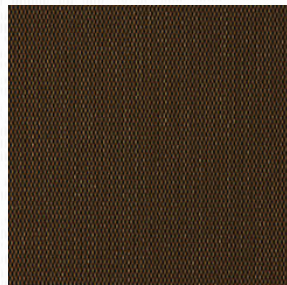
E Screen 1% / 3%



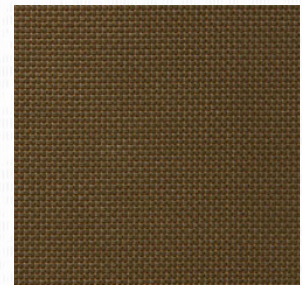
E Screen 5% / 10%



Flocke



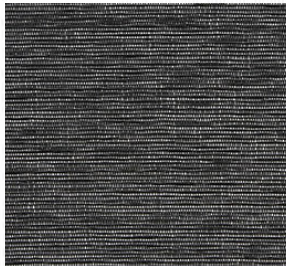
M Screen 3% / 5%



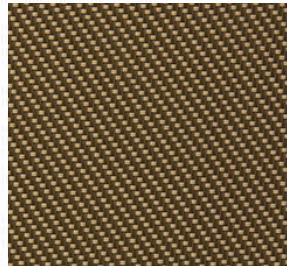
Natte 12%



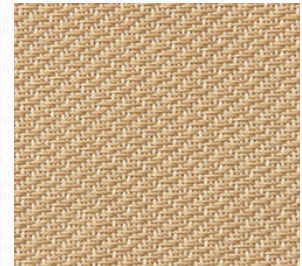
R Screen 5%



S Screen Origins



Satine



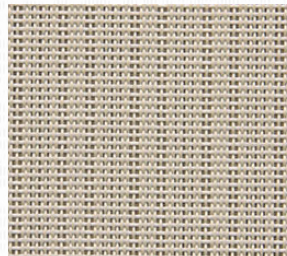
T Screen Classic



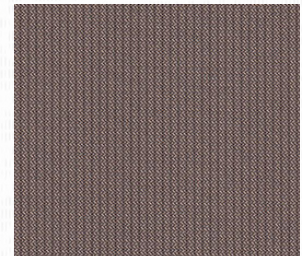
T Screen Deco



T Screen Naturals



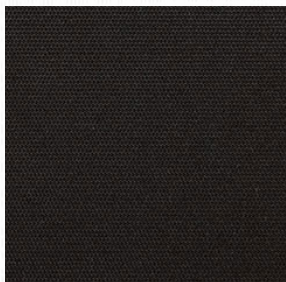
Vienne



Green Screen Revive 1% / 5%



Vizela



Avila Twilight

# Retail Pricing

## ROLLER SHADES FABRIC LISTINGS MERMET FABRICS

**Shades by Matiss**  
custom shading solutions



### MERMET

Sun Control Textiles™

Fabric Style	Price Group	Openness	Fabric Width	Fabric Content	Railroad	Seam	FR
Avila Twilight	4	0%	110"	4-PLY laminated fiberglass	Y	Y	Y
A Screen	3	14%	98"	36% Fiberglass / 64% Vinyl	Y	Y	Y
Chroma	4	2%	94.5"	36% Fiberglass / 64% Vinyl	Y	Y	Y
Deco 3%, 5%	3	3%	98"	36% Fiberglass / 64% Vinyl	Y	Y	Y
Edessa Twilight*	2	0%	118"	47% Polyester, 53% Acrylic, PVC Free ( NON FR )	Y	Y	N
Edessa Twilight FR*	4	0%	118"	47% Polyester, 53% Acrylic, PVC Free ( FR )	Y	Y	Y
E Screen 1%	4	1%	78"/98"/122"	36% Fiberglass / 64% Vinyl	Y	Y	Y
E Screen 3%,5%,10%	3	3%,5%,10%	78"/98"/122"	36% Fiberglass / 64% Vinyl	Y	Y	Y
Flocke	6	0%	78"/94.5"	42% Fiberglass / 51% Acrylic / 7% Cotton Flocked Backing / PVC Free	Y	Y	Y
Green Screen Revive	4	5%	118"	100% Polyester / PVC Free	Y	Y	Y
Green Screen Revive	4	1%	118"	100% Polyester / PVC Free	Y	Y	Y
M Screen	3	3%, 5%	78"/98"/122"	36% Fiberglass / 64% Vinyl	Y	Y	Y
Natte	4	12%	98"	42% Fiberglass / 58% Vinyl	Y	Y	Y
R Screen	3	5%	98"	36% Fiberglass / 64% Vinyl	Y	Y	Y
S Screen	4	4%	98"/122"	33.6% Fiberglass / 59.6% Vinyl / 6.8% Polyester	Y	Y	Y
Satine	4	5%	98"	42% Fiberglass / 58% Vinyl	Y	Y	Y
T Screen	3	3%	98"	36% Fiberglass / 64% Vinyl	Y	Y	Y
T-Screen Deco	3	3%,5%	122"	36% Fiberglass / 64% Vinyl	Y	Y	Y
T-Screen Naturals	3	3%,5%	122"	36% Fiberglass / 64% Vinyl	Y	Y	Y
Vienne	2	10%	98"	42% Fiberglass / 58% Vinyl	Y	Y	Y
Vizela	5	1%	94.5"	100% Fiberglass / EVA Coating PVC Free	Y	Y	Y

**Note:** \*Items in red have been discontinued and are available while supplies last.  
\*\*Items marked in blue may not be available or minimum order may be required



WILSON FABRICS  
BLACKOUT

# Wilson Blackout Collection

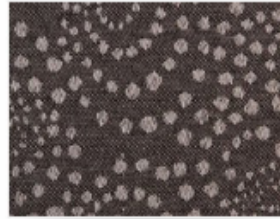
Home » Wilson Blackout Collection



Wilson Blackout  
Collection Arizona



Wilson Blackout  
Collection Austin



Wilson Blackout  
Collection Blizzard



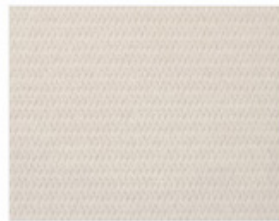
Wilson Blackout  
Collection Boston II



Wilson Blackout  
Collection Broome II



Wilson Blackout  
Collection Concord



Wilson Blackout  
Collection Detroit



Wilson Blackout  
Collection Flinders



Wilson Blackout  
Collection Lava



Wilson Blackout  
Collection Mercury II



Wilson Blackout  
Collection Moma



Wilson Blackout  
Collection Tuscany II



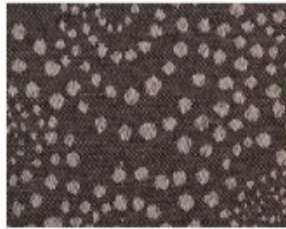
**WILSON FABRICS  
TRANSLUCENT**

# Wilson Translucent Collection

Home » Wilson Translucent Collection



**Wilson Translucent  
Collection Austin**



**Wilson Translucent  
Collection Blizzard**



**Wilson Translucent  
Collection Boston II**



**Wilson Translucent  
Collection Broome II**



**Wilson Translucent  
Collection Concord**



**Wilson Translucent  
Collection Detroit**



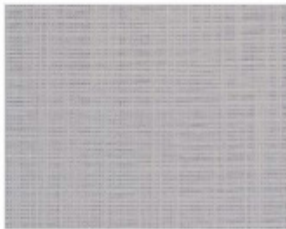
**Wilson Translucent  
Collection Lava**



**Wilson Translucent  
Collection Mercury II**



**Wilson Translucent  
Collection Moma**



**Wilson Translucent  
Collection Tuscany II**



**Wilson Translucent  
Collection Husk**

# Retail Pricing

## ROLLER SHADES FABRIC LISTINGS WILSON FABRICS

**Shades by Matiss**  
custom shading solutions

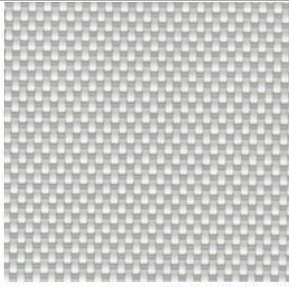


Fabric Style	Price Group	Openness	Fabric Width	Fabric Composition	Railroad	Seam	FR
Arizona Blackout*	5	0%	110"	100% Polyester	Y	Y	No
Arizona Translucent*	4	translucent	110"	100% Polyester	Y	Y	No
Austin Blackout*	5	0%	110"	100% Polyester	Y	Y	No
Austin Translucent*	4	translucent	110"	100% Polyester	Y	Y	No
Blizzard Blackout*	5	0%	110"	100% Polyester	Y	Y	No
Blizzard Translucent*	4	translucent	110"	100% Polyester	Y	Y	No
Boston II Blackout	4	0%	110"	100% Polyester	Y	Y	No
Boston II Translucent	3	translucent	110"	100% Polyester	Y	Y	No
Broome II Blackout	4	0%	110"	100% Polyester	Y	Y	No
Broome II Translucent	3	translucent	110"	100% Polyester	Y	Y	No
Concord Blackout	4	0%	110"	80% Polyester, 20% Cotton	Y	Y	No
Concord Translucent	3	translucent	110"	80% Polyester, 20% Cotton	Y	Y	No
Detroit Blackout*	6	0%	110"	100% Polyester	Y	Y	No
Detroit Translucent*	4	translucent	110"	100% Polyester	Y	Y	No
Flinders Blackout*	5	0%	110"	100% Polyester	Y	Y	No
Husk Sheer	3	sheer	114"	85% Polyester, 15% Linen	Y	Y	No
Lava Blackout*	5	0%	110"	100% Polyester	Y	Y	No
Lava Translucent*	4	translucent	110"	100% Polyester	Y	Y	No
Mercury II Blackout	5	0%	110"	100% Polyester	Y	Y	No
Mercury II Translucent	3	translucent	110"	100% Polyester	Y	Y	No
Moma Blackout*	5	0%	110"	100% Polyester	Y	Y	No
Moma Translucent*	4	translucent	110"	100% Polyester	Y	Y	No
Tuscany II Blackout	5	0%	110"	100% Polyester	Y	Y	No
Tuscany II Translucent	3	translucent	110"	100% Polyester	Y	Y	No

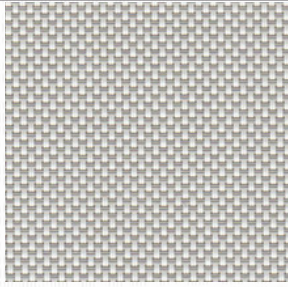
**Note:** \*special order items or minimum order may be required



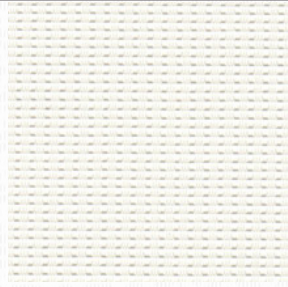
**PHIFER FABRICS**



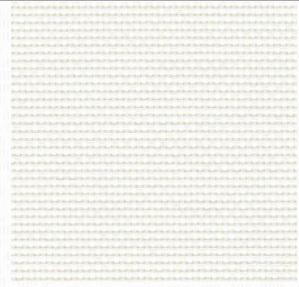
INFINITY 2



BASIC 3% / 5%



1000



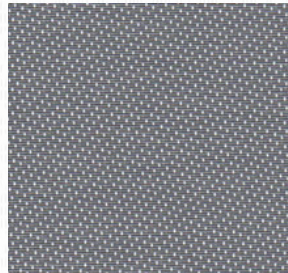
2000 / 2100



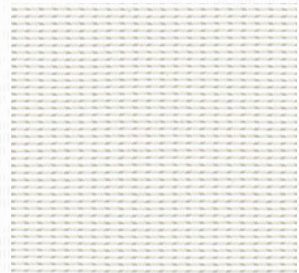
PERFORMANCE + 2390 / 2410 / 2500



2360 / 2390 / 2410 / 2500



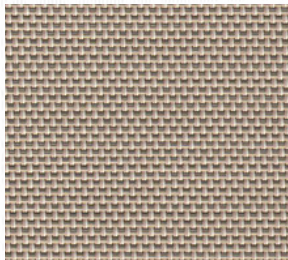
2701 / 2703 / 2705 / 2710



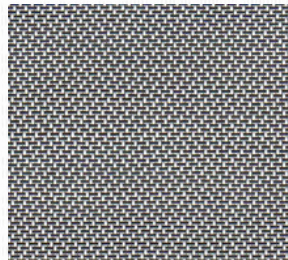
3000



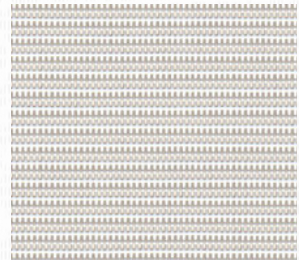
4000 / 4100 / 4400 WITH DOW ECOLIBRIUM



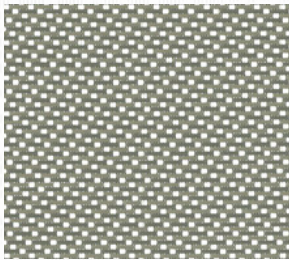
4500 / 4600



4550 / 4650



4800



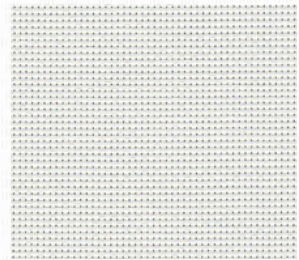
4901 / 4903



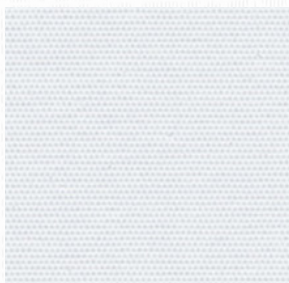
5000



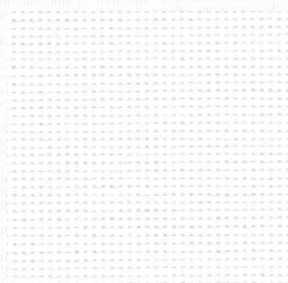
7000



7100



7500



8000

# Retail Pricing

**Shades by Matiss**  
custom shading solutions



## ROLLER SHADES FABRIC LISTINGS

### PHIFER FABRICS (Phifer are special order. Not all colors maybe available. Minimums may be required)

Fabric Style	Price Group	openness	Fabric Width	Fabric Content	Railroad	Seam	FR
Basic 3%	4	3%	98"	38% Fiberglass / 62% Vinyl on Fiberglass	Y	Y	Y
Basic 5%	4	5%	98"	38% Fiberglass / 62% Vinyl on Fiberglass	Y	Y	Y
Infinity2 1%	6	3%	63"/98"	100% TPO (Thermoplastic Olefin)	Y	Y	Y
Infinity2 3%	6	3%	63"/98"	100% TPO (Thermoplastic Olefin)	Y	Y	Y
Infinity2 5%	6	5%	63"/98"	100% TPO (Thermoplastic Olefin)	Y	Y	Y
1000	3	25%	72"/84"/96"	35% Fiberglass / 65% Vinyl on Fiberglass	Y	Y	Y
2000	4	5%	63"/98"/126"	37% Fiberglass / 63% Vinyl on Fiberglass	Y	Y	Y
2100	4	10%	63"/98"	37% Fiberglass / 63% Vinyl on Fiberglass	Y	Y	Y
2360	4	10%	63"/98"	35% Fiberglass / 65% Vinyl on Fiberglass	Y	Y	Y
2390	4	5%	63"/98"/126"	35% Fiberglass / 65% Vinyl on Fiberglass	Y	Y	Y
2390 Performance +	6	5%	63"/96"	34% Fiberglass / 64% Vinyl on Fiberglass 2% Aluminum Coating	Y	Y	Y
2410	4	3%	63"/98"/126"	35% Fiberglass / 65% Vinyl on Fiberglass	Y	Y	Y
2410 Performance +	6	3%	63"/96"	34% Fiberglass / 64% Vinyl on Fiberglass 2% Aluminum Coating	Y	Y	Y
2500	5	1%	63"/98"/126"	37% Fiberglass / 63% Vinyl on Fiberglass	Y	Y	Y
2500 Performance +	6	1%	63"/96"	34% Fiberglass / 64% Vinyl on Fiberglass 2% Aluminum Coating	Y	Y	Y
2701	5	1%	63"/98"/126"	36% Fiberglass / 64% Vinyl on Fiberglass	Y	Y	Y
2703	4	3%	63"/98"/126"	36% Fiberglass / 64% Vinyl on Fiberglass	Y	Y	Y
2705	4	5%	63"/98"/126"	34% Fiberglass / 66% Vinyl on Fiberglass	Y	Y	Y
2710	4	10%	63"/98"	34% Fiberglass / 66% Vinyl on Fiberglass	Y	Y	Y
3000	3	14%	72"/96"	35% Fiberglass / 65% Vinyl on Fiberglass	Y	Y	Y
4000 Eco	4	5%	63"/98"/126"	25% Polyester / 75% Vinyl on Polyester	Y	Y	Y
4100 Eco	4	10%	63"/84"/98"	25% Polyester / 75% Vinyl on Polyester	Y	Y	Y
4400 Eco	4	3%	63"/98"/126"	25% Polyester / 75% Vinyl on Polyester	Y	Y	Y
4500	4	5%	63"/98"	17% Polyester / 83% Vinyl on Polyester	Y	Y	Y
4550	4	5%	63"/98"	17% Polyester / 83% Vinyl on Polyester	Y	Y	Y
4600	4	3%	63"/98"	22% Polyester / 78% Vinyl on Polyester	Y	Y	Y
4650	5	3%	63"/98"	17% Polyester / 83% Vinyl on Polyester	Y	Y	Y
4800	5	1%	63"/96"/126"	24% Polyester / 76% Vinyl on Polyester	Y	Y	Y
4901	5	1%	63"/98"	17% Polyester, 83% Vinyl on Polyeste	Y	Y	Y
4903	5	3%	63"/98"	17% Polyester, 83% Vinyl on Polyeste	Y	Y	Y
5000	5	10%	74"/98"	28% Polyester / 72% Vinyl on Polyester	Y	Y	Y
7000	6	0%	94"/118"	100% Polyester with Acrylic Foamed Back	Y	Y	Y
7100	5	0%	72"/96"	Vinyl-coated Fiberglass fabric laminat-ed with two-ply 100% PVC blackout film	Y	Y	Y
7500	4	0%	78"/98"/118"	100% Polyester with Acrylic Coating	Y	Y	Y
8000	6	3%	118"	100% Polyester	Y	Y	Y

# Retail Pricing

**Shades by Matiss**  
custom shading solutions



## BLACKOUT, DECORATIVE & SCREEN ROLLER SHADES

Product price only, not including freight, state/local taxes, measuring and installation and other services associated with a custom installation

### ROLLER SHADES PRICE CHART 1

WIDTH TO:	37"	46"	55"	64"	72"	78"	83"	96"	103"	109"	120"	132"	144"	156"	168"
HEIGHT TO:															
48"	70	85	101	119	132	152	163	186	199	209	248	258	482	502	523
60"	83	101	122	142	158	181	194	223	238	251	291	305	544	570	596
72"	96	119	142	166	184	209	223	256	275	290	336	352	606	637	669
84"	109	135	161	189	213	238	254	292	313	329	380	398	669	705	741
96"	122	153	182	213	239	266	285	327	349	370	424	442	731	772	814
108"	137	168	203	236	265	295	313	363	389	410	468	489	793	840	887
120"	151	187	223	260	291	324	344	396	425	448	513	536	856	907	959
132"	163	203	257	283	317	353	375	433	464	490	556	582	918	975	1032
144"	192	239	286	332	374	415	441	508	545	576	656	698	980	1043	1105
156"	208	259	309	360	405	449	477	550	589	623	707	745	1043	1110	1178
168"	223	279	333	388	436	482	513	592	634	670	759	798	1105	1178	1250
180"	239	299	357	416	467	516	549	633	679	717	811	851	1167	1245	1323
192"	255	319	381	443	499	550	585	675	723	765	863	903	1230	1313	1396

### ROLLER SHADES PRICE CHART 2

WIDTH TO:	37"	46"	55"	64"	72"	78"	83"	96"	103"	109"	120"	132"	144"	156"	168"
HEIGHT TO:															
48"	75	93	111	130	145	168	178	204	218	230	269	281	507	529	552
60"	90	111	135	156	173	199	212	244	259	275	317	333	575	604	632
72"	106	130	156	182	205	230	246	282	301	318	364	383	644	678	712
84"	119	151	179	208	234	261	277	318	342	363	414	435	712	752	792
96"	135	168	199	234	262	292	311	358	384	405	463	487	781	826	872
108"	151	187	223	260	291	324	344	396	425	448	513	536	849	901	952
120"	166	205	244	286	319	355	379	436	472	493	562	588	918	975	1032
132"	179	223	267	309	348	389	412	474	508	536	608	639	986	1049	1112
144"	211	263	314	366	411	455	484	558	598	633	718	756	1055	1124	1192
156"	229	285	340	396	446	493	524	604	647	684	775	813	1124	1198	1272
168"	247	307	367	427	480	530	563	650	696	736	832	871	1192	1272	1352
180"	264	329	393	457	514	567	603	695	745	788	891	931	1285	1371	1457
192"	282	350	419	488	548	604	642	741	794	840	946	987	1329	1421	1512

**Note:** For all Width-Based Surcharges, Fascia and Cassette Surcharges, Design Options. Surcharges and Motorization see Surcharge Options price. Larger size units available upon special request. Send requests for price quote. Refer to Roller Shades Fabric Listings page for proper fabric price chart numbers.

# Retail Pricing

**Shades by Matiss**  
custom shading solutions



## BLACKOUT, DECORATIVE & SCREEN ROLLER SHADES

Product price only, not including freight, state/local taxes, measuring and installation and other services associated with a custom installation

### ROLLER SHADES PRICE CHART 3

WIDTH TO:	37"	46"	55"	64"	72"	78"	83"	96"	103"	109"	120"	132"	144"	156"	168"
HEIGHT TO: 48"	90	111	135	156	171	199	212	244	259	275	317	333	544	570	596
60"	109	135	161	187	210	235	251	290	308	327	375	393	622	654	687
72"	127	156	187	218	244	275	292	334	360	379	435	456	700	739	778
84"	145	179	213	249	280	313	332	381	410	433	492	515	778	823	869
96"	161	199	241	280	314	349	370	427	459	485	551	577	856	907	959
108"	179	223	267	309	348	386	412	474	508	536	608	639	933	992	1050
120"	197	246	293	340	384	425	451	521	557	588	669	700	1011	1076	1141
132"	215	267	319	371	418	462	493	568	607	643	726	762	1089	1161	1232
144"	240	299	357	416	467	516	549	633	679	717	801	839	1167	1245	1323
156"	260	324	387	450	506	558	594	685	734	776	866	906	1245	1329	1414
168"	280	348	417	485	545	601	638	737	790	835	926	967	1323	1414	1505
180"	300	373	446	519	584	643	683	789	846	894	986	1028	1401	1498	1596
192"	320	398	476	554	623	685	728	841	901	953	1046	1089	1479	1583	1687

### ROLLER SHADES PRICE CHART 4

WIDTH TO:	37"	46"	55"	64"	72"	78"	83"	96"	103"	109"	120"	132"	144"	156"	168"
HEIGHT TO: 48"	109	140	166	194	218	246	261	301	321	339	390	409	619	651	683
60"	135	168	199	234	262	292	311	358	384	405	463	487	715	756	796
72"	158	194	234	272	306	339	363	417	446	472	536	562	812	860	909
84"	179	223	267	309	348	386	412	474	508	536	608	639	909	965	1021
96"	203	251	301	348	392	436	462	531	571	602	684	715	1005	1070	1134
108"	223	277	332	386	436	482	511	592	633	669	757	793	1102	1174	1247
120"	246	306	366	426	480	529	562	649	695	734	830	868	1198	1279	1359
132"	270	334	400	464	521	576	612	706	758	799	902	946	1295	1384	1472
144"	298	370	443	515	580	638	678	783	839	887	1000	1049	1392	1488	1585
156"	323	401	480	558	628	690	734	847	908	960	1074	1124	1488	1593	1697
168"	348	432	517	601	676	742	789	911	977	1034	1150	1200	1585	1697	1810
180"	372	463	553	644	725	795	845	976	1046	1107	1224	1274	1681	1802	1923
192"	397	494	590	687	773	847	901	1040	1115	1180	1300	1350	1778	1907	2036

**Note:** For all Width-Based Surcharges, Fascia and Cassette Surcharges, Design Options. Surcharges and Motorization see Surcharge Options price. Larger size units available upon special request. Send requests for price quote. Refer to Roller Shades Fabric Listings page for proper fabric price chart numbers.

# Retail Pricing

**Shades by Matiss**  
custom shading solutions



## BLACKOUT, DECORATIVE & SCREEN ROLLER SHADES

Product price only, not including freight, state/local taxes, measuring and installation and other services associated with a custom installation

### ROLLER SHADES PRICE CHART 5

WIDTH TO:	37"	46"	55"	64"	72"	78"	83"	96"	103"	109"	120"	132"	144"	156"	168"
HEIGHT TO: 48"	139	175	208	243	273	305	324	373	399	421	482	505	718	759	799
60"	169	210	249	292	327	363	386	445	477	503	572	602	840	891	941
72"	197	243	292	340	383	421	451	519	555	588	663	696	961	1022	1083
84"	223	279	334	386	435	480	512	590	633	668	754	793	1083	1154	1225
96"	253	314	377	435	490	542	575	662	711	750	849	888	1205	1286	1367
108"	279	347	416	483	545	601	636	737	789	834	940	985	1326	1417	1508
120"	308	383	457	532	600	659	701	808	867	915	1031	1079	1448	1549	1650
132"	338	418	500	580	652	717	763	880	945	997	1122	1176	1569	1681	1792
144"	375	466	557	648	729	800	850	982	1053	1114	1248	1299	1691	1812	1934
156"	406	505	603	702	790	866	921	1063	1140	1206	1349	1399	1781	1912	2034
168"	437	544	650	756	851	931	991	1144	1227	1298	1450	1500	1891	2022	2144
180"	468	582	696	810	912	997	1061	1225	1314	1390	1550	1600	2001	2132	2254
192"	500	621	743	864	972	1063	1131	1306	1401	1482	1650	1700	2111	2242	2364

### ROLLER SHADES PRICE CHART 6

WIDTH TO:	37"	46"	55"	64"	72"	78"	83"	96"	103"	109"	120"	132"	144"	156"	168"
HEIGHT TO: 48"	174	219	260	304	341	378	403	464	497	524	596	625	843	894	945
60"	211	263	312	365	409	451	481	554	594	627	709	747	996	1059	1123
72"	247	304	365	425	479	524	562	646	692	732	823	864	1148	1225	1301
84"	279	349	417	482	544	597	638	735	789	833	937	985	1301	1390	1479
96"	317	393	471	544	612	675	716	825	886	935	1055	1104	1454	1556	1657
108"	349	433	519	604	682	748	792	919	984	1040	1169	1226	1607	1721	1836
120"	385	479	571	665	750	821	873	1008	1081	1141	1282	1342	1759	1887	2014
132"	422	523	625	726	815	894	951	1097	1178	1243	1396	1464	1912	2052	2192
144"	471	585	700	814	916	1002	1066	1231	1321	1397	1559	1632	2065	2217	2370
156"	510	634	758	882	993	1085	1154	1333	1430	1512	1687	1762	2217	2383	2548
168"	549	683	817	950	1069	1168	1242	1435	1539	1628	1814	1890	2370	2548	2726
180"	589	732	875	1018	1145	1251	1330	1537	1648	1744	1941	2018	2522	2714	2905
192"	628	780	933	1086	1222	1333	1418	1639	1757	1859	2066	2144	2656	2879	3083

**Note:** For all Width-Based Surcharges, Fascia and Cassette Surcharges, Design Options. Surcharges and Motorization see Surcharge Options price. Larger size units available upon special request. Send requests for price quote. Refer to Roller Shades Fabric Listings page for proper fabric price chart numbers.

# Retail Pricing

**Shades by Matiss**  
custom shading solutions



Product price only, not including freight, state/local taxes, measuring and installation and other services associated with a custom installation

## Top Treatment Width-Based Surcharges for Roller Shades

### **SURCHARGES** (Add to base price)

WIDTH TO:	37"	46"	55"	64"	72"	78"	83"	96"	103"	109"	120"	132"	144"	156"	168"
3" Fascia Skyline	45	53	60	68	75	80	85	97	103	108	118	130	140	150	160
4" Fascia Skyline	50	57	68	80	90	100	105	120	129	137	150	165	180	195	210
5" Fascia Skyline*	65	71	85	100	112	125	131	150	161	171	187	206	225	243	262
Fascia End Caps Add \$6.00/Pair															
Skyline Cassette 80, 100** or 120 with Fabric Insert and End-Caps	85	92	103	115	125	135	140	155	164	172	185	200	215	230	245
3" Pocket with Bottom Closure	74	92	110	126	142	154	164	190	204	216	238	262	286	310	334
4" Pocket with Bottom Closure	92	115	138	160	180	195	208	240	258	273	300	330	360	390	420
For 3" and 4" Pocket End Plates Add \$25.00/Pair															
5" Pocket with Bottom Closure	184	230	276	320	360	390	416	480	516	546	600	660	720	780	840
6" Pocket with Bottom Closure	222	276	330	432	468	498	576	618	654	720	792	864	936	1008	1080
For 5" and 6" Pocket End Plates Add \$50.00/Pair															

Note: Different pocket and bottom closure systems are available, please inquire.

Back Top Fascia can only be used with Architectural Series System. Can be used as front fascia with reverse roll.

#### Special Order Hardware (minimum may be required)

CM (Architectural Series Clutch System) with Back Top or Front Fascia***	100	107	118	130	140	150	155	170	179	187	200	215	230	245	260
For intermediate brackets and CM coupler add \$80.00/ each															
Decorative Valance 4.75"	155	192	226	264	300	325	350	400	425	450	500	550	600	650	700
4" heavy duty motor fascia system (works with star head motors)	90	99	108	117	125	131	136	149	156	162	173	185	197	209	221
For intermediate brackets and heavy duty coupler add \$150.00/ each															
7" heavy duty dual shade motor fascia system (works with star head motors)	310	337	364	391	415	433	448	487	508	526	559	595	631	667	703
For dual 7" fascia intermediate brackets and 2 heavy duty couplers add \$300.00/ each															
Bottom closure panel with side mounting panel for pre-built pockets	60	69	78	87	95	101	106	119	126	132	143	155	167	179	191
For dual box brackets add \$250.00/ pair for pre-built pockets															
For dual box intermediate brackets and 2 heavy duty couplers add \$300.00/ each															

#### **No Charge Options:**

Chain Color or Type (Plastic or Stainless)  
Fabric turned 90° (width for height)  
External or Heat Sealed hembar (standard)  
Reverse Roll

\*For dual shades the L shaped fascia is turned upside down

\*\*Most popular cassette

\*\*\*Back top fascia can only be used with CM system  
Can be used as front fascia with reverse roll

# Retail Pricing

**Shades by Matiss**  
custom shading solutions



Product price only, not including freight, state/local taxes, measuring and installation and other services associated with a custom installation

## Side and Bottom Channel Surcharges for Roller Shades **SURCHARGES** (Add to base price)

Height To:	48"	60"	72"	84"	96"	108"	120"	132"	144"	156"	168"	180"	192"		
Side Channels/Pair	72	90	108	126	144	162	180	198	216	234	252	270	288		
Width To:	37"	46"	55"	64"	72"	78"	83"	96"	103"	109"	120"	132"	144"	156"	168"
Bottom Channel	27	34	41	48	54	59	62	72	77	81	90	99	108	117	126
CM Side Channel System (Minimum qt. may be required)															
Height To:	48"	60"	72"	84"	96"	108"	120"	132"	144"	156"	168"	180"	192"		
Side Channels	72	90	108	126	144	162	180	198	216	234	252	270	288		
CM Center Channel	108	135	162	189	216	243	270	297	324	351	378	405	432		
Width To:	37"	46"	55"	64"	72"	78"	83"	96"	103"	109"	120"	132"	144"	156"	168"
CM L Bottom Channel	24	31	37	43	49	53	56	65	69	73	81	89	97	105	113

## Cable Guide and Extra Heavy Duty Exterior System Surcharges for Roller Shades **SURCHARGES** (Add to base price)

Interior Cable Guide System Add \$55.00
Exterior Cable Guide System Add \$110.00
Extra Heavy Duty Exterior System Add \$240.00
Exterior Shades Clutch (stainless steel chain) Uplift Add \$50.00

## Panel Track System **SURCHARGES** (Add to base price)

WIDTH TO:	50"	57"	68"	80"	90"	100"	105"	120"	129"	137"	150"	165"	180"	195"	210"
Panel Track System***	135	147	159	177	188	207	215	237	248	263	274	300	327	352	379
Panel Track System with Fascia Cover***	147	170	183	210	229	244	263	289	300	319	345	375	405	435	455

\*\*\*Add the cost of the Panel Track System to the appropriate roller shade base price width x height

Quote requests for Specialty Application systems such as Skylight, Solarium, Bottom Up shade systems, Specialty Shape Items, Zipper System must be faxed to 800-414-1042 or emailed to [info@shadesbymatiss.com](mailto:info@shadesbymatiss.com)  
Full range of Rollease, ZMC and other hardware system parts are available upon special request, please inquire.  
All prices are subject to change without notice. Fabric availability may change. Check for most up-to-date information.

# Retail Pricing

**Shades by Matiss**  
custom shading solutions



Product price only, not including freight, state/local taxes, measuring and installation and other services associated with a custom installation

## Additional **SURCHARGES** (Add to base price)

Clutch Upgrade	Add \$10.00 per each unit per level of upgrade
Metalized Skyline Clutch And Bracket Cover Upgrade	Add \$20.00 per each set
Spring Assist Skyline Pin End	Add \$25.00 per each unit
Coupled Shade	Add \$50.00 per each unit
Dual Shade (Dual/Double brackets)	Add \$50.00 per each unit
EasySpring Plus Premium Cordless Lift System by Rollease	Add \$50.00 per each unit
Steel / Wood Spring Rollers	Add \$10.00 per each unit
Galaxy G200 Skyline Geared Clutch	Add \$25.00 per each unit
Galaxy G400 Skyline Geared Clutch	Add \$50.00 per each unit
Galaxy G200 Skyline Spring Assist Geared Clutch	Add \$125.00 per each unit
Galaxy G400 Skyline Spring Assist Geared Clutch	Add \$225.00 per each unit
Standard Bracket Covers	Add \$4.00 per pair



Product price only, not including freight, state/local taxes, measuring and installation and other services associated with a custom installation

## Optional

### RETAIL PRICE MOTORIZATION SURCHARGES (Add to base price)

#### Somfy RTS Motorization (add to base price)

R28 RTS Motor (With 8 AA Batteries)	Add \$450.00 per each unit
R28 RTS Motor and Solar Pack	Add \$650.00 per each unit
ST-30 Sonesse RTS Quiet Motor (Low Voltage)	Add \$750.00 per each unit
ST-40 / ST-50 Sonesse RTS Quiet Motors (110V)	Add \$750.00 per each unit
Sonesse Ultra Quiet 50 DC (Low Voltage), works only with ZMC hardware	Add \$1000.00 per each unit
Tellis Pure RTS Remote Control (specify Single or Multi channel)	Add \$175.00 per each unit
RTS Wall Switch (specify Single or Multi channel)	Add \$325.00 per each unit

#### Gaposa Radio Motorization (add to base price)

Sileo 40 Radio Motor by Gaposa (110V)	Add \$500.00 per each unit
Super Sileo 40 Radio Motor by Gaposa (110v)	Add \$550.00 per each unit
Super Sileo 40 DC Radio/ Dry Contact Motor by Gaposa (Low Voltage)	Add \$600.00 per each unit
Super Sileo 50 Radio Motor by Gaposa (110v)	Add \$575.00 per each unit
Gaposa 1 Channel Remote	Add \$125.00 per each unit
Gaposa 6 Channel Remote	Add \$125.00 per each unit
Gaposa 96 Channel Remote With Timer	Add \$375.00 per each unit
Gaposa 1 Channel Wall Mount Remote	Add \$125.00 per each unit
Gaposa 4 Channel Wall Mount Remote	Add \$125.00 per each unit
Gaposa Decora 1 Channel Wireless Wall Switch	Add \$125.00 per each unit
Gaposa Decora 4 Channel Wireless Wall Switch	Add \$125.00 per each unit

#### Gaposa Standard Hardwired Motorization (add to base price)

Sileo 40 hardwired motor by Gaposa (110v)	Add \$450.00 per each unit
Momentary Decorator Paddle Switch (White) single pole	Add \$50.00 per each unit
Maintained Decorator Paddle Switch (White) single pole	Add \$50.00 per each unit

We offer a full line of Somfy, RollEase Acmeda, Gaposa and ZMC products. Call or email your price inquiries.



Product price only, not including freight, state/local taxes, measuring and installation and other services associated with a custom installation

Optional

## RETAIL PRICE MOTORIZATION SURCHARGES (Add to base price)

### Automate Rollease Acmeda Radio Motorization (add to base price)

Ultra small 18mm Radio motor w/battery pack (18mm DCRF Motor, .2N/80r)	Add \$320.00 per each unit
25 mm Radio motor w/built-in battery (comparable to Somfy R28 RTS)	Add \$350.00 per each unit
Quiet 28mm Radio motor w/built-in battery (equivalent to Somfy Sonesse 30 RTS)	Add \$450.00 per each unit
35 mm Radio motor w/built-in battery (comparable to Somfy 400 series motors)	Add \$575.00 per each unit
Quiet 45mm Radio motor w/built-in battery (comparable to Somfy Sonesse 50 RTS)	Add \$640.00 per each unit
Ultra powerful 45 mm Radio motor w/built-in battery (comparable to Somfy 500 series Altus)	Add \$675.00 per each unit
Recharger for DC Battery Motors (18/25/28/35/45)	Add \$60.00 per each unit
Sun Sensor	Add \$75.00 per each unit
Solar Panel for 18/25/28/35/45mm Battery Motors	Add \$150.00 per each unit
1 Channel Decorator Wall Switch (Cut In)	Add \$85.00 per each unit
2 Channel Decorator Wall Switch (Cut In)	Add \$90.00 per each unit
15 Channel Decorator Switch (Cut In)	Add \$110.00 per each unit
5 Channel Decorator Surface Mount Switch	Add \$95.00 per each unit
1 Channel Remote	Add \$110.00 per each unit
15 Channel Remote w/Levelling Control	Add \$135.00 per each unit
Wi-Fi Bridge for Remote Motor Access w/ free iPhone and Android App	Add \$450.00 per each unit

Optional

## NET PRICED MOTORIZATION SURCHARGES (Add to base price)

### NET PRICED MOTORIZATION SURCHARGES (add to base price)

Individual Group Control 4n1 Motor Controller (4 motors)	Add \$375.00 per each unit
IGC Decorator Switch	Add \$45.00 per each unit
Modular Cable for IGC 7'	Add \$10.00 per each unit
Group Control System II (GCS II) (4 Motors)	Add \$300.00 per each unit
Hirschmann Disconnect Plug	Add \$22.00 per each unit
Somfy My Link RTS Smartphone and Tablet Interface	Add \$190.00 per each unit
Somfy Universal RTS Interface II (URTSI II-16 Channel)	Add \$400.00 per each unit
Simu 500 RTS Motor (discontinued, while supplies last)	Add \$180.00 per each unit
Gaposa Roll.app for iOS and Android	Add \$400.00 per each unit
TELIS 16 channel RTS Remote Controller	Add \$235.00 per each unit

We offer a full line of Somfy, Rollease Acmeda, Gaposa and ZMC products. Call or email your price inquiries.

# Retail Pricing

**Shades by Matiss**  
custom shading solutions



Product price only, not including freight, state/local taxes, measuring and installation and other services associated with a custom installation

## Other Surcharges

### **SHIPPING** (Add to base price)

Minimum Shipping \$10.00/ order	
Shade Under 96" Wide	Add 5.00 per each unit
Oversize Shade Width 96"-107"	Add \$75.00 per each order
Oversize Shade Width 108"-119"	Add \$100.00 per each order
Oversize Shade Width 120"-130"	Add \$125.00 per each order
Oversize Shade Width 131"-150"	Add \$150.00 per each order
Oversize Shade Width 151"-166"	Add \$175.00 per each order
Oversize Shade Width 167"-192"	Add \$200.00 per each unit



## MATISS, INC. LIMITED LIFETIME WARRANTY

Matiss, Inc. warrants to the original purchasers of its products, upon the terms of this limited warranty, that its products will be free from defects in materials and workmanship for the reasonable lifetime (except fabrics and motorized items -see below), for so long as the original purchaser owns the product, provided that such products were installed, used and maintained according to Matiss, Inc written instructions; no salesperson, dealer, retailer or any representative of Matiss, Inc. has the authority to modify this limited warranty in any way, either verbally or in writing.

Fabrics are warranted from the date of purchase by the original purchaser for 5 (five) years.

Motorized products and motor control systems are warranted for a period of 5 (five) years from the date of purchase by original purchaser.

This limited warranty shall remain in effect only if the Matiss, Inc. product has been installed by an authorized dealer, and maintained, cleaned, treated and used correctly. This limited warranty does not cover any conditions resulting from accidents, alterations, normal wear and tear, improper installation, misuse or abuse, exposure to heat and humidity, fading or discoloration over time. All moving parts, such as cords, will eventually wear out and fabric may fray, which conditions are normal wear and tear, and are not warranted.

The sole remedy under this limited warranty is that Matiss, Inc. shall repair or replace, in its sole discretion, the product or components found to be defective. Matiss, Inc. shall not be responsible for shipping charges or labor costs incurred for measuring, demounting or installation. Repairs will be made with like or similar parts. Colors may vary from lot to lot and may not exactly match sample swatch, sample book or previous purchases. Discontinued components or color selections will be replaced with the closest equivalent current components.

Limited Warranty Limitations:

**(a) THIS LIMITED WARRANTY IS EXCLUSIVE AND IN LIEU OF ALL OTHER OBLIGATIONS, LIABILITIES OR WARRANTIES. MATISS, INC. DISCLAIMS ALL OTHER REPRESENTATIONS AND WARRANTIES, WHETHER EXPRESS, IMPLIED OR STATUTORY, INCLUDING ANY WARRANTY OF MERCHANTABILITY, USE, FITNESS FOR A PARTICULAR PURPOSE OR ARISING FROM USAGE OR COURSE OF DEALING, OR OTHERWISE.**

(b) In no event shall Matiss, Inc. be liable for loss of profits, indirect, special or consequential damages arising out of any product covered by this limited warranty, or incidental damages, including without limitation loss of use, loss of time or inconvenience, or expenses such as telephone, towing, crane, lift charges and haul out charges.

(c) In no event shall the liability of Matiss, Inc. exceed the cost of the product.

(d) Some states do not allow the exclusion or limitation of consequential or incidental damages, so this exclusion or limitation may not apply to you.

To obtain warranty service, contact the dealer from whom you purchased the product. Warranty claims must be accompanied by proof of purchase. Products ordered outside of the recommended manufacturing specifications (oversized blinds, out of specs units, specialty units etc.) are not covered by this warranty.